



**MWCS-CC9-MYA**  
**MYE 900MHz CableSAT**  
**TV Channel Changer**



**MYE Entertainment**  
1-661-964-0217  
[www.myclubtv.com](http://www.myclubtv.com)  
All Rights Reserved 2017

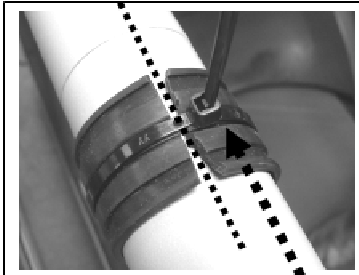
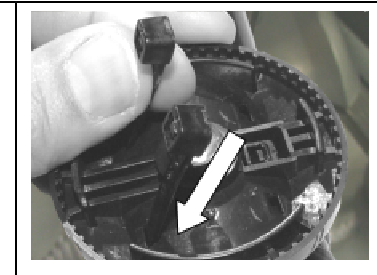
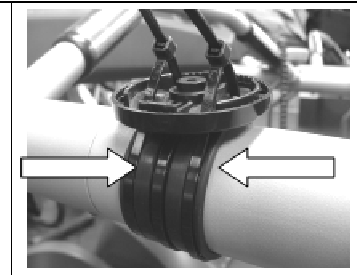
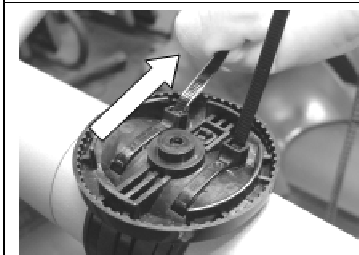
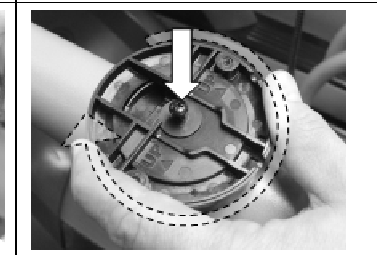

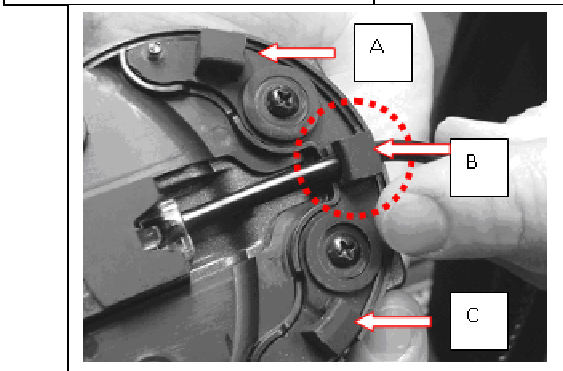
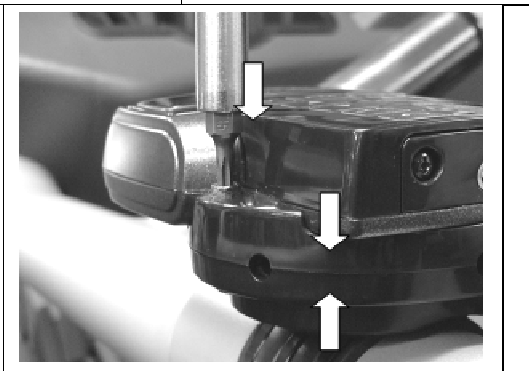
## Channel Changer Transmitter Installation

\*\*\*Before using CableSAT, the TV tuner needs to be scanned to register the set top box on channel 3

1. Remove TV Channel Changer's rear mounting cup
2. Plug the MCSC power cable in the equipment's CSAFE port. (Option 1)
3. If a power supply is being used, plug the MCSC cable into the power supply. (Option 2)
4. Plug the RJ45 plug of the MCSC cable into the back of the TV Channel Changer.
5. \*\*\*Note: The TV Channel Changer is always "ON" when power is going to the unit.
6. Mount the Tv Channel Changer on the cardio equipment.



## Attaching the Channel Changer

		
<p>Wrap the Secure Grip Band around the intended mounting pole and cut to fit. Do not overlap ends or have a gap over 1/8". Secure the Grip Band with 1 MYE Entertainment nylon tie in the center channel. OFFSET the knuckle of the nylon tie from center by approximately 1/4". Trim</p>	<p>Install the Mounting Base over the nylon tie knuckle. Insert two MYE Entertainment nylon ties into the holes opposite the tie knuckle hole.</p>	<p>Seat the nylon ties into the corresponding channels of the Secure Grip Band.</p>
		
<p>Pull the nylon ties tight to align all 3 tie knuckles. Trim all excess nylon tie completely.</p>	<p>Position and install the Rear Flange onto the Mounting Base. Interlocking gears assure secure positioning regardless of the rotation.</p>	<p>Insert one end of the power cable into the RJ45 jack on the back of the assembly.</p>
		
<p>Route the CSAFE cable through the appropriate rubber cable blocks A, B or C depending on where you need the cable to exit the flange.</p>	<p>Align and attach the Channel Changer assembly to the Rear Flange using the Front Flange mounting screws.</p>	

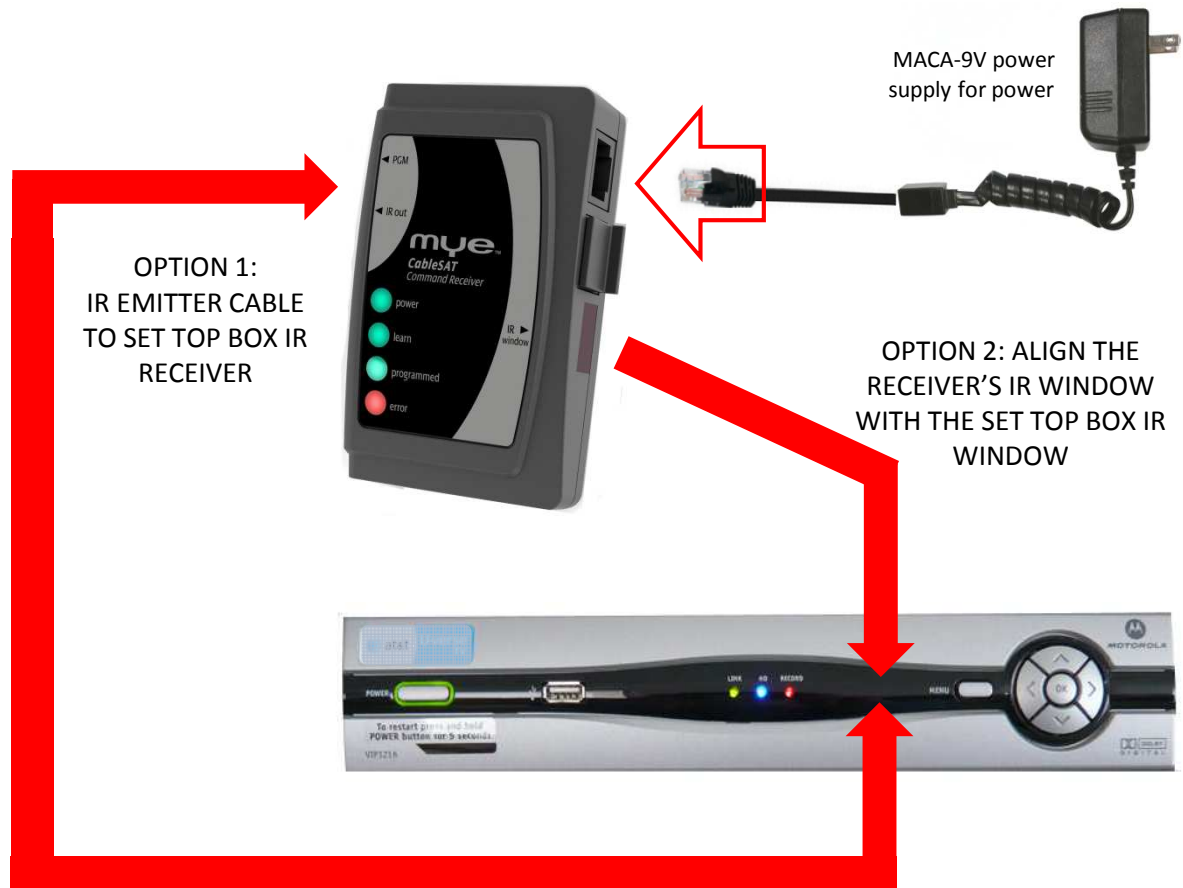
## Receiver Installation

Use MWCS-C3-S straight cable to run power from the MACA-9V power supply to the CableSAT receiver's power IN.

Connecting the receiver to the SET TOP BOX can be achieved by ONE of the two options.

OPTION 1: Plug the MWCS-IR emitter cable into the receiver and attach the IR emitter to the Set Top Box IR window.

OPTION 2: Align the CableSAT receiver's IR window with the IR window of the Set Top Box.



OPTION 1:  
IR EMITTER CABLE  
RUN TO SET TOP BOX

EXAMPLE OF IR EMITTER  
INSTALLED  
TO FRONT OF SET TOP BOX



**\*\*\*Once the receiver is installed you can select your Set Top Box (below).**

Unit is shipped in AT&T mode. Match the lit LEDS to your Set Top Box type.

- 1) Start with the CableSAT Receiver power disconnected.
- 2) Using a pen or paperclip, press and hold the "PGM" switch.
- 3) Connect power to CableSAT Command Receiver.
- 4) Hold in the "PGM" switch until the "power" and "learn" LEDs are solid.
- 4) Release the "PGM" switch. Transmitter is now in AUTO LEARN mode.
- 5) Press and release the switch a 2<sup>nd</sup> time.
- 6) All LEDS will light briefly, followed by the Power LED. This indicates you are now in the set top box series of Presets.
- 7) To select one of the set top boxes listed press the "PGM" switch to cycle through the Presets. Set Top Boxes are represented in the chart below.
- 8) Once the desired set top box is displayed, press and hold the "PGM" switch until the red "error" LED turns solid.
- 9) Release the "PGM" key. All LEDS will flash briefly to indicate the CableSat Receiver is programmed and ready for use.

	LED	LEARN MODE	LEARNED COMMANDS	AT&T	COMCAST	DIRECTV	VERIZON, RCN, GRANDE MEDIACOM, ROGERS, SUDDENLINK, BEND, WAVE, CHARTER (ARRIS)	TIME WARNER, COX, WOW, BRIGHT HOUSE, CABLEVISION, OPTIMUM CHARTER (CISCO)	DISH, BELL CANADA	COX MINI BOX
1	POWER									
2	LEARN									
3	PROGRAMMED									
4	ERROR									

**\*\*\*IR remote Auto Learn Mode.**

For use when your Set Top Box is not listed in PRESETS.

- 1) Start with the CableSAT Receiver power disconnected.
- 2) Using a pen or paperclip, press and hold the "PGM" switch.
- 3) Connect power to CableSAT Command Receiver.
- 4) Hold in the "PGM" switch until the "power" and "learn" LEDs are solid.
- 5) Release the "PGM" switch. Transmitter is now in AUTO LEARN mode.
- 6) Point the TV's IR remote control at the IR window on the side panel of the CableSAT Receiver.
- 7) Press the Channel Up key on the remote control.
- 8) The learn LED will flicker and the Programmed LED will light solid once the command has been learned. The learn LED will then light solid again.
- 9) Press the Channel Down key on the remote control.
- 10) Again the Learn LED will flicker and the Programmed LED will light solid once the command has been learned. Learn LED will light solid again.
- 11) Press the following keys in succession. Be sure to wait for the Learn and Program LED to light up as each key is learned.
- 12) Press: 0, 1, 2, 3, 4, 5, 6, 7, 8, 9, and "Enter" on the remote.
- 13) All LEDS will flash briefly to indicate that the CableSAT receiver is programmed and ready.

\*\*\*\*If you get a red ERROR light, remove power from the receiver and start again.

## FCC STATEMENT



This system complies with Part 15 of the FCC Rules.

Operation of this device is subject to the following two conditions:

(1) This device may not cause harmful interference, and

(2) This device must accept any interference received, including interference that may cause undesired operation.

This equipment has been tested and found to comply with the limits for a Class B digital device, pursuant to Part 15 of the FCC Rules. These limits are designed to provide reasonable protection against harmful interference in a residential installation. This equipment generates, uses and can radiate radio frequency energy and, if not installed and used in accordance with the instructions, may cause harmful interference to radio communications. However, there is no guarantee that interference will not occur in a particular installation. If this equipment does cause harmful interference to radio or television reception, which can be determined by turning the equipment off and on, the user is encouraged to try to correct the interference by one or more of the following measures:

1) Reorient or relocate the receiving antenna. 2) Increase the separation between the equipment and receiver.

3) Connect the equipment into an outlet on a circuit different from that to which the receiver is connected. 4) Consult the dealer or an experienced radio/TV technician for help.

This equipment complies with the limits for a Class B computing device, pursuant to the FCC Rules. Operation with non-approved equipment can result in interference to radio and TV reception. The user is cautioned that changed and modifications made to the equipment without the approval of the manufacturer could void the user's authority to operate this equipment.

## LIMITED WARRANTY

MYE ENTERTAINMENT (MYE) WARRANTS ALL NEW MYE PRODUCTS TO BE FREE FROM DEFECTS IN MATERIALS AND MANUFACTURERS FOR THE WARRANTY PERIODS SET FORTH BELOW. THE WARRANTY PERIODS COMMENCE ON THE INVOICE DATE OF THE ORIGINAL PURCHASE. THIS WARRANTY APPLIES ONLY AGAINST DEFECTS DISCOVERED WITHIN THE WARRANTY PERIOD AND EXTENDS ONLY TO THE ORIGINAL PURCHASER OF THE PRODUCT. PARTS REPAIRED OR REPLACED UNDER THE TERMS OF THIS WARRANTY WILL BE WARRANTED FOR THE REMAINDER OF THE ORIGINAL WARRANTY PERIOD ONLY. TO CLAIM UNDER THIS WARRANTY, THE BUYER MUST NOTIFY MYE OR YOUR AUTHORIZED MYE ENTERTAINMENT DEALER WITHIN 30 DAYS AFTER THE DATE OF DISCOVERY OF ANY NONCONFORMITY AND MAKE THE AFFECTED PRODUCT AVAILABLE FOR INSPECTION BY MYE ENTERTAINMENT OR ITS SERVICE REPRESENTATIVE. MYE ENTERTAINMENT PRODUCTS DEEMED DEFECTIVE BY A MYE ENTERTAINMENT REPRESENTATIVE WILL BE ISSUED A RETURN AUTHORIZATION NUMBER. MYE ENTERTAINMENT WILL NOT ACCEPT RETURNS WITHOUT A RETURN AUTHORIZATION NUMBER. MYE ENTERTAINMENT RESERVES THE RIGHT, AT THEIR OPTION, TO REPAIR OR REPLACE THE PRODUCT AFTER VERIFICATION OF DEFECT. PRODUCT THAT FAILS AFTER THE WARRANTY PERIOD EXPIRES WILL BE REPAIRED OR REPLACED AT THE CURRENT PART AND LABOR PRICING AFTER AUTHORIZATION FROM THE CUSTOMER. REPAIRS ARE WARRANTED FOR 90 DAYS. MYE ENTERTAINMENT'S OBLIGATIONS UNDER THIS WARRANTY ARE LIMITED AS SET FORTH BELOW:

### **WARRANTY PERIOD AND COVERAGE: 2 YEARS (REPAIR or REPLACEMENT AND ONE WAY SHIPPING)**

#### CONDITIONS AND RESTRICTIONS:

THE WARRANTY APPLIES TO THE MYE ENTERTAINMENT PRODUCT ONLY 1) WHILE IT REMAINS IN THE POSSESSION OF THE ORIGINAL PURCHASER AND PROOF OF PURCHASE IS DEMONSTRATED. 2) IT HAS NOT BEEN SUBJECT TO ACCIDENT, MISUSE, ABUSE, IMPROPER SERVICE, MECHANICAL OR ELECTRICAL NON-MYE ENTERTAINMENT AUTHORIZED MODIFICATION. 3) CLAIMS MADE WITHIN THE WARRANTY PERIOD. THIS WARRANTY DOES NOT COVER DAMAGED OR FAILURE CAUSED BY ELECTRICAL WIRING NOT BEING IN COMPLIANCE WITH ELECTRICAL CODES OR MYE'S OWNER MANUAL SPECIFICATIONS.

WARRANTIES OUTSIDE THE U.S. AND CANADA MAY VARY.

LIMITED WARRANTY SHALL NOT APPLY TO:

•SOFTWARE UPGRADES.

•NORMAL WEAR AND TEAR, CONSUMABLES AND COSMETIC ITEMS INCLUDING BUT NOT LIMITED TO LABELS.

•REPAIRS REFORMED ON MYE PRODUCTS MISSING A SERIAL NUMBER OR WITH A SERIAL TAG THAT HAS BEEN ALTERED, REATTACHED OR DEFACED.

•SERVICE CALLS TO CORRECT INSTALLATION OF THE PRODUCT OR INSTRUCT OWNERS ON HOW TO USE THE PRODUCT.

•PICK UP AND DELIVERY INVOLVING REPAIRS

•ANY LABOR COSTS INCURRED BEYOND THE APPLICABLE LABOR WARRANTY PERIOD

•THE USER IS CAUTIONED THAT CHANGES OR MODIFICATIONS NOT EXPRESSLY APPROVED BY THE MANUFACTURER OF THE PRODUCT COULD VOID THE USER'S AUTHORITY TO OPERATE THE PRODUCT.

THE WARRANTIES PROVIDED HEREIN ARE THE EXCLUSIVE WARRANTIES GIVEN BY MYE ENTERTAINMENT AND SUPERSEDE ANY PRIOR, CONTRARY OR ADDITIONAL REPRESENTATIONS, WHETHER ORAL OR WRITTEN, ANY IMPLIED WARRANTIES, INCLUDING THE WARRANTY OF MERCHANTABILITY OR FITNESS FOR A PARTICULAR PURPOSE THAT APPLY TO ANY PARTS DESCRIBED ABOVE ARE LIMITED IN DURATION TO THE PERIODS OF EXPRESS WARRANTIES GIVEN ABOVE FOR THOSE SAME PARTS. MYE HEREBY DISCLAIMS AND EXCLUDES THOSE WARRANTIES THEREAFTER. SOME STATES DO NOT ALLOW LIMITATIONS ON HOW LONG AN IMPLIED WARRANTY LASTS, SO THE ABOVE LIMITATION MAY NOT APPLY TO YOU. MYE ENTERTAINMENT ALSO HEREBY DISCLAIMS AND EXCLUDES ALL OTHER OBLIGATIONS OR LIABILITIES, EXPRESS OR IMPLIED, ARISING BY LAW OR OTHERWISE, WITH RESPECT TO ANY NONCONFORMANCE OR DEFECT IN ANY PRODUCT, INCLUDING BUT NOT LIMITED TO: (A) ANY OBLIGATION, LIABILITY, RIGHT, CLAIM OR REMEDY IN TORT, WHETHER OR NOT ARISING FROM THE NEGLIGENCE OF MYE OR ITS SUPPLIERS (WHETHER ACTIVE, PASSIVE OR IMPUTED); AND (B) ANY OBLIGATION, LIABILITY, RIGHT, CLAIM OR REMEDY FOR LOSS OF OR DAMAGE TO ANY PRODUCT. THIS DISCLAIMER AND RELEASE SHALL APPLY EVEN IF THE EXPRESSED WARRANTY SET FORTH ABOVE FAILS OF ITS ESSENTIAL PURPOSE.

FOR ANY PRODUCT DESCRIBED ABOVE THAT FAILS TO CONFORM TO ITS WARRANTY, MYE ENTERTAINMENT WILL PROVIDE, AT THEIR OPTION ONE OF THE FOLLOWING: 1) REPAIR, 2) REPLACEMENT OR 3) REFUND OF THE PURCHASE PRICE.

MYE AND/OR ITS SUPPLIERS SHALL HAVE NO OBLIGATION OR LIABILITY, WHETHER ARISING IN CONTRACT (INCLUDING WARRANTY), TORT (INCLUDING ACTIVE, PASSIVE, OR IMPUTED NEGLIGENCE AND STRICT LIABILITY), OR OTHERWISE, FOR DAMAGE TO THE PRODUCT, PROPERTY DAMAGE, LOSS OF USE, REVENUE OR PROFIT, COST OF CAPITAL, COST OF SUBSTITUTE PRODUCT, ADDITIONAL COSTS INCURRED BY BUYER (BY WAY OF CORRECTION OR OTHERWISE) OR ANY OTHER INCIDENTAL, SPECIAL, INDIRECT, OR CONSEQUENTIAL DAMAGES, WHETHER RESULTING FROM NON-DELIVERY OR FROM THE USE, MISUSE OR INABILITY TO USE THE PRODUCT. THIS EXCLUSION APPLIES EVEN IF THE ABOVE WARRANTY FAILS OF ITS ESSENTIAL PURPOSES AND REGARDLESS OF WHETHER SUCH DAMAGES ARE SOUGHT FOR BREACH OF WARRANTY, BREACH OF CONTRACT, NEGLIGENCE OR STRICT LIABILITY IN TORT OR UNDER ANY OTHER LEGAL THEORY.

SOME STATES DO NOT ALLOW THE EXCLUSION OR LIMITATION OF INCIDENTAL OR CONSEQUENTIAL DAMAGES SO THE ABOVE LIMITATION MAY NOT APPLY TO YOU.

THIS WARRANTY GIVES SPECIFIC LEGAL RIGHTS. YOU MAY ALSO HAVE OTHER RIGHTS WHICH VARY FROM STATE TO STATE.

**MYE Entertainment**

1-661-964-0217

[www.myclubtv.com](http://www.myclubtv.com)